

专业大功率LED灯具制造

Professional High Power LED Lights Manufacture

LED Flood Light, LED High Bay Light, LED Street Light,
LED Tube, LED Panle, LED Bulb



武汉中杰科创科技有限公司

WUHAN ZJKC TECHNOLOGY CO.,LTD.

电话: +86-027-86636657

传真: +86-027-86636658

邮箱: info@zjksolar.com

网址: <http://www.zjksolar.com>

<http://zjkc.en.alibaba.com>

联系地址: 湖北省武汉市东湖开发区财富一路2号3楼

Tel: +86-027-86636657

Fax: +86-027-86636658

E-mail: info@zjksolar.com

Web: <http://www.zjksolar.com>

<http://zjkc.en.alibaba.com>

Address: third floor, Building, NO.2 of caifu Road number one road,
east lake development zone Wuhan 430074, Hubei PRC, CN



专业大功率LED灯具制造

Professional High Power

LED Lights Manufacture

武汉中杰科创科技有限公司

WUHAN ZJKC TECHNOLOGY CO.,LTD.

公司资质

NATURAL INTELLIGENCE



目录

Directory

公司简介 About ZJKC	3
LED投光灯 LED Flood Light	4
LED隧道灯 LED Tunnel Light	11
全彩LED投光灯 RGB-LED Flood Light	12
LED感应投光灯 LED Flood Light With Sensor	13
LED高棚灯 LED High Bay Light	14
LED路灯 LED Street Light	19
LED路灯灯泡 LED Street Light Bulb	24
LED日光灯管 LED Tube Light	26
LED面板灯 LED Panel Light	28
LED商店灯 LED Shop Light	30
LED防潮灯 LED Moistureproof Ceiling Light – IP65	32
LED玉米灯 LED Corn Light	35
LED横插灯 LED G24 Horizon Light	36
LED吸顶灯 LED Down Light	37
LED筒灯 LED Ceiling Light	38
LED灯泡 LED Bulb	39
LED射灯 LED Spot Light	40



武汉中杰科技发展有限公司
WUHAN ZHONGJIE TECHNOLOGY CO., LTD.

公司简介

武汉中杰科创科技有限公司是一家集研发、生产和销售LED灯，为世界各地的客户提供完善解决方案的高科技企业。公司拥有大型工厂，经验丰富的工作人员，高品质、专业化是我们不断追求的目的，公司拥有一支庞大的专业技术研发工程师团队，在自主开发和生产的同时，我们与一些大学和科研院所合作，研发具有领先优势的高质量产品。

为确保产品高品质，我们严格按照ISO9001:2000的要求和5S的工作程序实施生产，我们的LED产品都获得了国际CE, RoHS, FCC, C-Tick, SAA, TUV & UL认证和产品专利证书。

我们的主要产品包括LED投光灯，LED日光灯，LED大功率工矿灯，LED路灯，LED太阳能灯，LED灯泡，LED射灯，LED筒灯，LED显示屏，LED灯条等。

“提供高品质的产品、服务、创新”是我们的管理精神，我们立志专业化的研发和生产，我们以提供最好的服务和高质量的产品作为我们对客户的承诺。我们以成为世界一流的LED生产商为目标而不断进取创新。

我们建立了一个高效的全球销售网络，产品出口到世界各地，并应用在很多大型项目中，如亚洲，欧洲，非洲，美洲，中东等，我们与世界各地的越来越多的客户建立牢固的合作关系。

欢迎联系我们共同探讨合作，我们随时准备为你提供最好的产品和服务，我们期待着我们的真诚和你共建双赢。

About ZJKC

WUHAN ZJKC TECHNOLOGY CO., LTD. specializes in R&D, manufacturing and marketing of LED lights as well as offering lighting solutions for our customers around the world. With constant pursuit of high quality, we own an experienced R&D team. At same time, we cooperate with some Universities and research institutes to develop advanced led products to meet the needs and even lead in the changing market.

To ensure high quality, we have built up strict procedures for production in compliance with the requirements of ISO9001:2000 and 5s implementations. All our led products have obtained such national and international approvals as CE, RoHS, FCC, C-Tick, SAA, TUV & UL and several products obtained patents.

Our products range from led flood light, led tube light, led high bay light, led street light, led solar light, led bulb, led spot light, led down light, led panel to led strip light.

With the tenet of "Providing superior product & best service and Innovating", we always work hard to be the top manufacturer of LED Lights.

Based on our efficient global distribution network, our products have been applied in many big projects and exported to more than 30 countries & districts.

Welcome to contact us for consultation and communication, we are ready to provide you the best products and service at any time. Looking forward to creating win-win situation with you sincerely.

LED FLOOD LIGHT LED投光灯



Features:

- Applied wide voltage: AC85 – 305V, DC12 – 48V
- With constant current constant voltage control circuit
- Overcome the light instability because of no using of ballast
- Special design for heat sinking, ensuring safe working temperature and long life
- True color rendering with optional light colors
- Life span: >50,000 hours
- Certifications: CE, RoHS, FCC, C-Tick, SAA, TUV & UL

产品特点:

- 适用宽电压: AC85 – 305V, DC12 – 48V
- 电子部分采用恒流恒压控制
- 消除了因镇流器而产生的电网，噪音污染和灯光的不稳定等现象
- 特殊的散热设计，降低灯体内的温度，有效保证光源和电源的寿命
- 显色指数好，各种色温段可选
- 寿命: >50,000小时
- 证书: CE, RoHS, FCC, C-Tick, SAA, TUV & UL

Application: tunnel, building, bridge, hotel, advertising board, factory etc. outdoor lighting.

产品应用: 隧道, 建筑外墙, 桥梁, 酒店, 广告墙, 工厂及其他室内外照明

LED FLOOD LIGHT LED投光灯



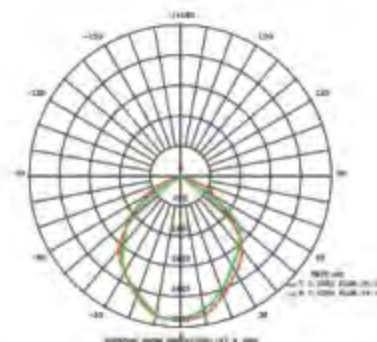
FLIW10 - FLIW30



FLIW50

Reliable Technical Data 技术参数

- Input voltage 输入电压: AC85 - 305V, DC12 - 48V
- Frequency 频率范围: 47 - 63Hz
- Power factor 功率因素: >0.95
- Luminous efficiency 发光效率: 90 - 100lm/W
- Color temperature 色温: 3,000K - 5,000K; 5,000K - 10,000K
- Color rendering index 显色指数Ra: 80 - 85
- Lighting angle 发光角度: 120° * 60° rectangular optical 矩形光斑
or 60° round optical 圆形光斑
- Operating temperature 适用环境温度: -30°C - 50°C
- Light efficiency 灯具效率: >90%
- IP rating 防护等级: IP65
- Light body material 灯具材质: Aluminum house & PC 铝材 & PC
- Economical lifetime 灯具寿命: >50,000Hrs
- Certification 认证: CE, RoHS, FCC, C-Tick, SAA, TUV & UL



Characteristics 产品特性

Model No 型号	LED Power 功率	LED Source 光源	Luminous FLux 光通量	Input Voltage 输入电压	L * W * H (mm) 尺寸
FLIW10	10W	1pc*10W	>900lm (Tj=25°C)	AC85 - 305V, DC12 - 48V	115*85*90mm
FLIW20	20W	1pc*20W	>1800lm (Tj=25°C)	AC85 - 305V, DC12 - 48V	118*140*100mm
FLIW30	30W	1pc*30W	>2700lm (Tj=25°C)	AC85 - 305V, DC12 - 48V	225*185*130mm
FLIW50	50W	1pc*50W	>4500lm (Tj=25°C)	AC85 - 305V, DC12 - 48V	310*235*170mm

LED FLOOD LIGHT LED投光灯



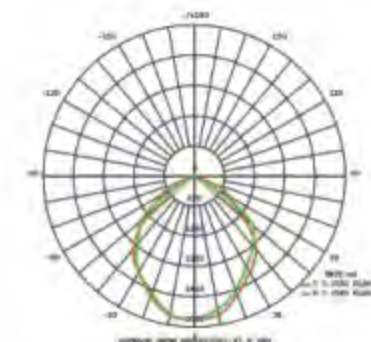
FLIW70



FLIW100

Reliable Technical Data 技术参数

- Input voltage 输入电压: AC85 - 305V, DC12 - 48V
- Frequency 频率范围: 47 - 63Hz
- Power factor 功率因素: >0.95
- Luminous efficiency 发光效率: 90 - 100lm/W
- Color temperature 色温: 3,000K - 5,000K; 5,000K - 10,000K
- Color rendering index 显色指数Ra: 80 - 85
- Lighting angle 发光角度: 120° * 60° rectangular optical 矩形光斑
or 60° round optical 圆形光斑
- Operating temperature 适用环境温度: -30°C - 50°C
- Light efficiency 灯具效率: >90%
- IP rating 防护等级: IP65
- Light body material 灯具材质: Aluminum house & PC 铝材 & PC
- Economical lifetime 灯具寿命: >50,000Hrs
- Certification 认证: CE, RoHS, FCC, C-Tick, SAA, TUV & UL



Characteristics 产品特性

Model No 型号	LED Power 功率	LED Source 光源	Luminous FLux 光通量	Input Voltage 输入电压	L * W * H (mm) 尺寸
FLIW70	70W	1pc*70W	>6300lm (Tj=25°C)	AC85 - 305V, DC24 - 48V	340*285*115mm
FLIW100	100W	1pc*100W	>9000lm (Tj=25°C)	AC85 - 305V, DC24 - 48V	340*410*120mm

LED FLOOD LIGHT LED投光灯



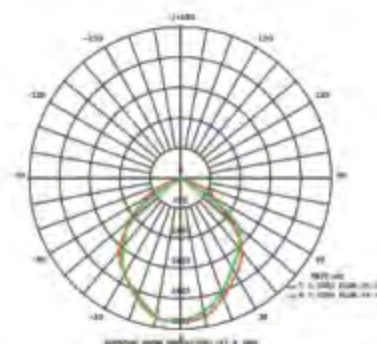
FLIW120



FLIW150

Reliable Technical Data 技术参数

- Input voltage 输入电压: AC85 – 305V
- Frequency 频率范围: 47 – 63Hz
- Power factor 功率因素: >0.95
- Luminous efficiency 发光效率: 90 – 100lm/W
- Color temperature 色温: 3,000K – 5,000K; 5,000K – 10,000K
- Color rendering index 显色指数Ra: 80 – 85
- Lighting angle 发光角度: 120° * 60° rectangular optical 矩形光斑
or 60° round optical 圆形光斑
- Operating temperature 适用环境温度: -30°C – 50°C
- Light efficiency 灯具效率: >90%
- IP rating 防护等级: IP65
- Light body material 灯具材质: Aluminum house & PC 铝材 & PC
- Economical lifetime 灯具寿命: >50,000Hrs
- Certification 认证: CE, RoHS, FCC, C-Tick, SAA, TUV & UL



Characteristics 产品特性

Model No 型号	LED Power 功率	LED Source 光源	Luminous Flux 光通量	Input Voltage 输入电压	L * W * H (mm) 尺寸
FLIW120	120W	1pc*120W	>10800lm (Tj=25°C)	AC85 – 305V	400*350*120mm
FLIW150	150W	1pc*150W	>13500lm (Tj=25°C)	AC85 – 305V	400*350*120mm

LED FLOOD LIGHT LED投光灯



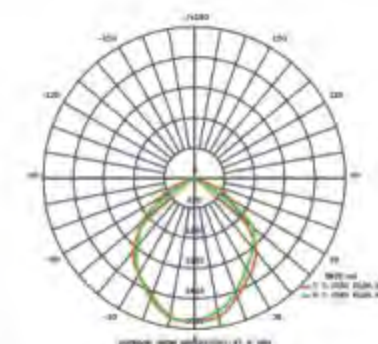
FPW120 – FPW150



FBW120 – FBW150

Reliable Technical Data 技术参数

- Input voltage 输入电压: AC85 – 305V
- Frequency 频率范围: 47 – 63Hz
- Power factor 功率因素: >0.95
- Luminous efficiency 发光效率: 90 – 100lm/W
- Color temperature 色温: 3,000K – 5,000K; 5,000K – 10,000K
- Color rendering index 显色指数Ra: 80 – 85
- Lighting angle 发光角度: 120° * 60° rectangular optical 矩形光斑
or 60° round optical 圆形光斑
- Operating temperature 适用环境温度: -30°C – 50°C
- Light efficiency 灯具效率: >90%
- IP rating 防护等级: IP65
- Light body material 灯具材质: Aluminum house & PC 铝材 & PC
- Economical lifetime 灯具寿命: >50,000Hrs
- Certification 认证: CE, RoHS, FCC, C-Tick, SAA, TUV & UL



Characteristics 产品特性

Model No 型号	LED Power 功率	LED Source 光源	Luminous Flux 光通量	Input Voltage 输入电压	Color 颜色	L * W * H (mm) 尺寸
FPW120	120W	3pcs*40W	>10800lm (Tj=25°C)	AC85 – 305V	white	430*340*240mm
FPW150	150W	3pcs*50W	>13500lm (Tj=25°C)	AC85 – 305V	white	430*340*240mm
FBW120	120W	3pcs*40W	>10800lm (Tj=25°C)	AC85 – 305V	black	460*320*230mm
FBW150	150W	3pcs*50W	>13500lm (Tj=25°C)	AC85 – 305V	black	460*320*230mm

LED FLOOD LIGHT LED投光灯



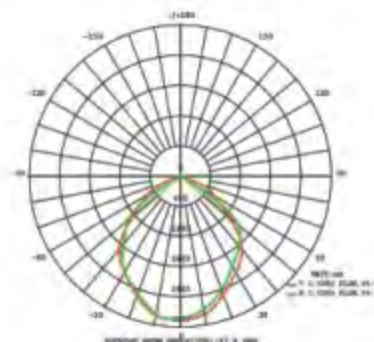
FLNIW200 – FLNIW240



FLNIW300 – FLNIW480

Reliable Technical Data 技术参数

- Input voltage 输入电压: AC85 – 305V
- Frequency 频率范围: 47 – 63Hz
- Power factor 功率因素: >0.95
- Luminous efficiency 发光效率: 90 – 100lm/W
- Color temperature 色温: 3,000K – 5,000K; 5,000K – 10,000K
- Color rendering index 显色指数Ra: 80 – 85
- Lighting angle 发光角度: 120° * 60° rectangular optical 矩形光斑
or 60° round optical 圆形光斑
- Operating temperature 适用环境温度: -30°C – 50°C
- Light efficiency 灯具效率: >90%
- IP rating 防护等级: IP65
- Light body material 灯具材质: Aluminum house & PC 铝材 & PC
- Economical lifetime 灯具寿命: >50,000Hrs
- Certification 认证: CE, RoHS, FCC, C-Tick, SAA, TUV & UL



Characteristics 产品特性

Model No 型号	LED Power 功率	LED Source 光源	Luminous Flux 光通量	Input Voltage 输入电压	L * W * H (mm) 尺寸
FLNIW200	200W	1pc*200W	>18000lm	AC85 – 305V	440*290*220mm
FLNIW240	240W	1pc*240W	>21600lm	AC85 – 305V	440*290*220mm
FLNIW300	300W	2pcs*150W	>27000lm	AC85 – 305V	500*440*260mm
FLNIW320	320W	2pcs*160W	>28800lm	AC85 – 305V	500*440*260mm
FLNIW400	400W	2pcs*200W	>36000lm	AC85 – 305V	500*440*260mm
FLNIW480	480W	2pcs*240W	>43200lm	AC85 – 305V	500*440*260mm

LED FLOOD LIGHT LED投光灯



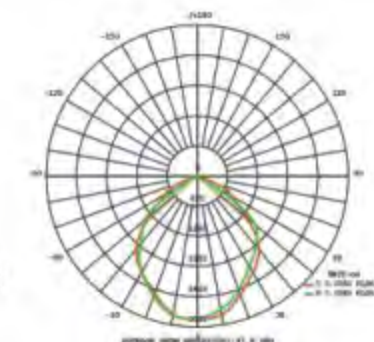
FHW150 – FHW240



FHW300 – FHW320

Reliable Technical Data 技术参数

- Input voltage 输入电压: AC85 – 305V
- Frequency 频率范围: 47 – 63Hz
- Power factor 功率因素: >0.95
- Luminous efficiency 发光效率: 90 – 100lm/W
- Color temperature 色温: 3,000K – 5,000K; 5,000K – 10,000K
- Color rendering index 显色指数Ra: 80 – 85
- Lighting angle 发光角度: 120° * 60° rectangular optical 矩形光斑
or 60° round optical 圆形光斑
- Operating temperature 适用环境温度: -30°C – 50°C
- Light efficiency 灯具效率: >90%
- IP rating 防护等级: IP65
- Light body material 灯具材质: Aluminum house & PC 铝材 & PC
- Economical lifetime 灯具寿命: >50,000Hrs
- Certification 认证: CE, RoHS, FCC, C-Tick, SAA, TUV & UL



Characteristics 产品特性

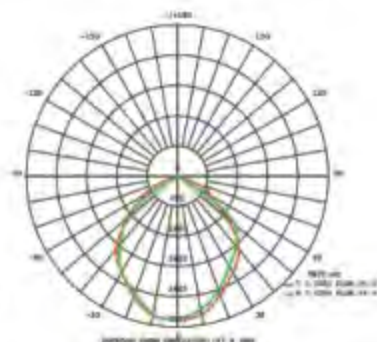
Model No 型号	LED Power 功率	LED Source 光源	Luminous Flux 光通量	Input Voltage 输入电压	L * W * H (mm) 尺寸
FHW150	150W	1pc* 150W	> 13500lm (Tj=25°C)	AC85~305V	350* 300* 130mm
FHW200	200W	1pc* 200W	> 18000lm (Tj=25°C)	AC85~305V	400* 300* 130mm
FHW240	240W	1pc* 240W	> 21600lm (Tj=25°C)	AC85~305V	400* 300* 130mm
FHW300	300W	2pcs* 150W	> 27900lm (Tj=25°C)	AC85~305V	600* 300* 130mm
FHW320	320W	2pcs* 160W	> 28800lm (Tj=25°C)	AC85~305V	600* 300* 130mm
FHW400	400W	2pcs* 200W	> 36000lm (Tj=25°C)	AC85~305V	800* 300* 130mm
FHW480	480W	2pcs* 240W	> 43200lm (Tj=25°C)	AC85~305V	800* 300* 130mm
FHW600	600W	4pcs* 150W	> 54000lm (Tj=25°C)	AC85~305V	600* 600* 130mm

LED TUNNEL LIGHT LED隧道灯



Reliable Technical Data 技术参数

- Input voltage 输入电压: AC85 – 305V, DC24V – 48V
- Frequency 频率范围: 47 – 63Hz
- Power factor 功率因素: >0.95
- Luminous efficiency 发光效率: 90 – 100lm/W
- Color temperature 色温: 3,000K – 5,000K; 5,000K – 10,000K
- Color rendering index 显色指数 Ra: 80 – 85
- Lighting angle 发光角度: 120° * 60°
- Light distribution curve 配光曲线: rectangular optical spot 矩形光斑
- Operating temperature 适用环境温度: -30°C – 50°C
- Light efficiency 灯具效率: >90%
- IP rating 防护等级: IP65
- Light body material 灯具材质: Aluminum house & PC 铝材 & PC
- Economical lifetime 灯具寿命: >50,000Hrs
- Certification 认证: CE, RoHS, FCC, C-Tick, SAA, TUV & UL



Characteristics 产品特性

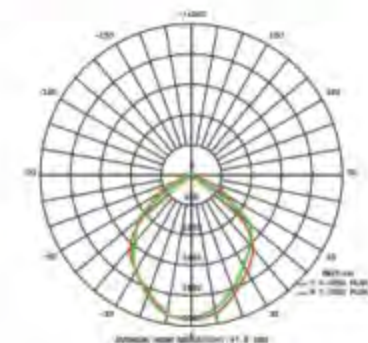
Model No 型号	LED Power 功率	LED Source 光源	Luminous Flux 光通量	Input Voltage 输入电压	L * W * H (mm) 尺寸
TFLW60	60W	1pc*60W	>5400lm (Tj=25°C)	AC85 – 305V, DC24 – 48V	390*320*240mm
TFLW100	100W	2pcs*50W	>9000lm (Tj=25°C)	AC85 – 305V, DC24 – 48V	390*320*240mm
TFLW120	120W	2pcs*60W	>10800lm (Tj=25°C)	AC85 – 305V	620*310*240mm
TFLW140	140W	2pcs*70W	>12600lm (Tj=25°C)	AC85 – 305V	620*310*240mm
TFLW160	160W	2pcs*80W	>14400lm (Tj=25°C)	AC85 – 305V	620*310*240mm
TFLW200	200W	4pcs*50W	>18000lm (Tj=25°C)	AC85 – 305V	950*310*250mm

RGB – LED FLOOD LIGHT 全彩LED投光灯



Reliable Technical Data 技术参数

- Input voltage 输入电压: AC85 – 305V, DC12 – 48V
- Frequency 频率范围: 47 – 63Hz
- Power factor 功率因素: >0.95
- Emitting Color 发光颜色: red, green, blue
- Lighting angle 发光角度: 120° * 60° rectangular optical 矩形光斑 or 60° round optical 圆形光斑



- Operating temperature 适用环境温度: -30°C – 50°C
- Light efficiency 灯具效率: >90%
- IP rating 防护等级: IP65
- Light body material 灯具材质: Aluminum house & PC 铝材 & PC
- Economical lifetime 灯具寿命: >50,000Hrs
- Certification 认证: CE, RoHS, FCC, C-Tick, SAA, TUV & UL
- RF wireless remote control, the red, green and blue light can be adjust automatically, multiple adjustment modes optionally. 无线射频控制器遥控, 实现全彩自动变化。

Characteristics 产品特性

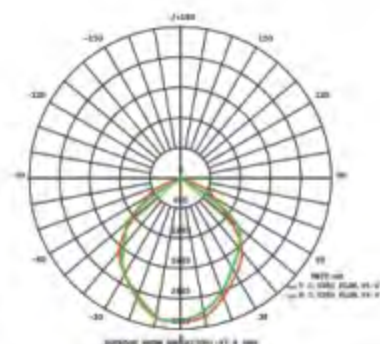
Model No 型号	LED Power 功率	LED Source 光源	Input Voltage 输入电压	Remote Control 遥控方式	L * W * H (mm) 尺寸
FLIW21-RGB	21W	7W Red+7W Green+7W Blue	AC85 – 305V, DC12 – 48V	RF	118*140*100mm
FLIW30-RGB	30W	10W Red+10W Green+10W Blue	AC85 – 305V, DC12 – 48V	RF	225*185*130mm
FLIW42-RGB	42W	14W Red+14W Green+14W Blue	AC85 – 305V, DC12 – 48V	RF	310*235*170mm
FLIW60-RGB	60W	20W Red+20W Green+20W Blue	AC85 – 305V, DC12 – 48V	RF	310*235*170mm

LED FLOOD LIGHT WITH SENSOR LED感应投光灯



Reliable Technical Data 技术参数

- Input voltage 输入电压: AC85 – 305V, DC12 – 48V
- Frequency 频率范围: 47 – 63Hz
- Power factor 功率因素: >0.95
- Luminous efficiency 发光效率: 90 – 100lm/W
- Color temperature 色温: 3,000K – 5,000K; 5,000K – 10,000K
- Color rendering index 显色指数 Ra: 80 – 85
- Lighting angle 发光角度: 120° * 60° rectangular optical 矩形光斑 or 60° round optical 圆形光斑
- Operating temperature 适用环境温度: -30°C – 50°C
- Light efficiency 灯具效率: >90%
- IP rating 防护等级: IP65
- Light body material 灯具材质: Aluminum house & PC 铝材 & PC
- Economical lifetime 灯具寿命: >50,000Hrs
- Certification 认证: CE, RoHS, FCC, C-Tick, SAA,
- Infrared sensors for human body 自动红外人体感应



Characteristics 产品特性

Model No 型号	LED Power 功率	Luminous Efficiency 发光效率	Detection Distance 感应距离	Detection Range 感应角度	Ambient Light 环境照度	Time-Delay 延长时间
FLDW10-FLDW150	10W-150W	90-100lm/W	8-12m(<22°C)	180° * 40°	10-1000Lux	5±2sec – 4±1min

LED HIGH BAY LIGHT LED高棚灯



Features:

- Applied wide voltage: AC85 – 305V, DC12 – 48V
- With constant current constant voltage control circuit
- Overcome the light instability & noise, because of no using of ballast
- Special design for heat sinking, ensuring safe working temperature and long life
- True color rendering with optional light colors
- High light transmission with the use of lens
- Life span: >50,000 hours
- Certifications: CE, RoHS, FCC, C-Tick, SAA, TUV & UL

产品特点:

- 适用宽电压: AC85 – 305V, DC12 – 48V
- 电子部分采用恒流恒压控制
- 克服了因镇流器产生的噪音污染和引起的灯光的不稳定等现象
- 特殊的散热设计, 降低灯体内的温度, 有效保证光源和电源的寿命
- 显色指数好, 各种色温段可选
- 使用透镜, 防尘, 高透光率
- 寿命: >50,000小时
- 证书: CE, RoHS, FCC, C-Tick, SAA, TUV & UL

Application: buildings, factory, warehouse, large super market, sculpture, stadiums, squares, docks etc.

产品应用: 厂房, 超市, 展览馆, 体育馆及其他需要工矿照明的场所

LED HIGH BAY LIGHT LED高棚灯



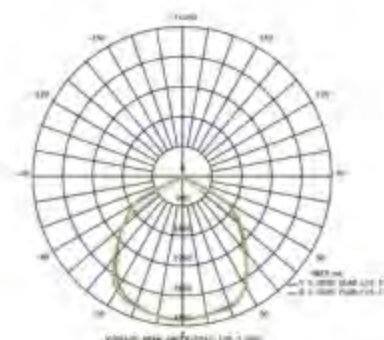
HBIW30



HBIW100

Reliable Technical Data 技术参数

- Input voltage 输入电压: AC85 – 305V, DC12 – 48V
- Frequency 频率范围: 47 – 63Hz
- Power factor 功率因素: >0.95
- Luminous efficiency 发光效率: 90 – 100lm/W
- Light efficiency 灯具效率: >90%
- Operating temperature 适用环境温度: -30°C – 50°C
- Color temperature 色温: 3,000K – 5,000K; 5,000K – 10,000K
- Color rendering index 显色指数Ra: 80 – 85
- Light distribution curve 配光曲线: round optical spot 圆形光斑
- Lighting angle 发光角度: 45°; 60°; 90°; 120°
- IP rating: IP54/ IP65
- Light body material 灯具材质: Aluminum house 铝材
- Economical lifetime 灯具寿命: >50,000Hrs
- Certification 认证: CE, RoHS, FCC, C-Tick, SAA, TUV & UL



Characteristics 产品特性

Model No 型号	LED Power 功率	LED Source 光源	Luminous Flux 光通量	Input Voltage 输入电压	D * H (mm) 尺寸
HBIW30	30W	1pc*30W	>2700lm (Tj=25°C)	AC85 – 305V, DC12 – 48V	D=160, H=230
HBIW60	60W	1pc*60W	>5400lm (Tj=25°C)	AC85 – 305V, DC24 – 48V	D=160, H=260
HBIW80	80W	1pc*80W	>7200lm (Tj=25°C)	AC85 – 305V, DC24 – 48V	D=160, H=350
HBIW90	90W	1pc*90W	>8100lm (Tj=25°C)	AC85 – 305V, DC24 – 48V	D=160, H=380
HBIW100	100W	1pc*100W	>9000lm (Tj=25°C)	AC85 – 305V, DC24 – 48V	D=160, H=410

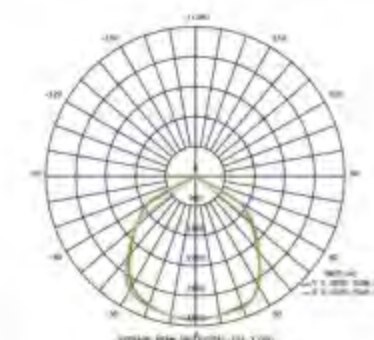
LED HIGH BAY LIGHT LED高棚灯



HBIW120 – HBIW240

Reliable Technical Data 技术参数

- Input voltage 输入电压: AC85 – 305V
- Frequency 频率范围: 47 – 63Hz
- Power factor 功率因素: >0.95
- Luminous efficiency 发光效率: 90 – 100lm/W
- Light efficiency 灯具效率: >90%
- Operating temperature 适用环境温度: -30°C – 50°C
- Color temperature 色温: 3,000K – 5,000K; 5,000K – 10,000K
- Color rendering index 显色指数Ra: 80 – 85
- Light distribution curve 配光曲线: round optical spot 圆形光斑
- Lighting angle 发光角度: 45°; 60°; 90°; 120°
- IP rating: IP54/ IP65
- Light body material 灯具材质: Aluminum house 铝材
- Economical lifetime 灯具寿命: >50,000Hrs
- Certification 认证: CE, RoHS, FCC, C-Tick, SAA, TUV & UL



Characteristics 产品特性

Model No 型号	LED Power 功率	LED Source 光源	Luminous Flux 光通量	Input Voltage 输入电压	D * H (mm) 尺寸
HBIW120	120W	1pc*120W	>10800lm (Tj=25°C)	AC85 – 305V	D=250, H=380
HBIW150	150W	1pc*150W	>13500lm (Tj=25°C)	AC85 – 305V	D=250, H=380
HBIW180	180W	1pc*180W	>16200lm (Tj=25°C)	AC85 – 305V	D=250, H=410
HBIW200	200W	1pc*200W	>18000lm (Tj=25°C)	AC85 – 305V	D=250, H=410
HBIW240	240W	4pcs*60W	>21600lm (Tj=25°C)	AC85 – 305V	D=250, H=460

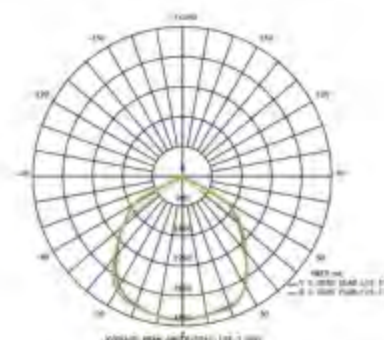
LED HIGH BAY LIGHT LED高棚灯



HBPW120 – HBPW200

Reliable Technical Data 技术参数

- Input voltage 输入电压: AC85 – 305V
- Frequency 频率范围: 47 – 63Hz
- Power factor 功率因素: >0.95
- Luminous efficiency 发光效率: 90 – 100lm/W
- Light efficiency 灯具效率: >90%
- Operating temperature 适用环境温度: -30℃ – 50℃
- Color temperature 色温: 3,000K – 5,000K; 5,000K – 10,000K
- Color rendering index 显色指数Ra: 80 – 85
- Light distribution curve 配光曲线: round optical spot 圆形光斑
- Lighting angle 发光角度: 45°; 60°; 90°; 120°
- IP rating: IP54/ IP65
- Light body material 灯具材质: Aluminum house 铝材
- Economical lifetime 灯具寿命: >50,000Hrs
- Certification 认证: CE, RoHS, FCC, C-Tick, SAA, TUV & UL



Characteristics 产品特性

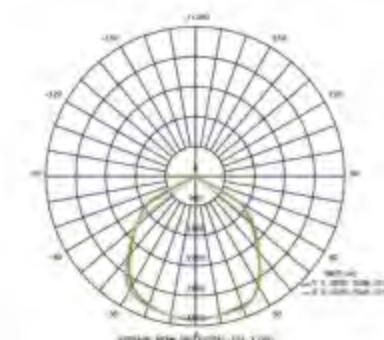
Model No 型号	LED Power 功率	LED Source 光源	Luminous Flux 光通量	Input Voltage 输入电压	L * W * H (mm) 尺寸
HBPW120	120W	1pc*120W	>10800lm (Tj=25℃)	AC85 – 305V	350*310*380mm
HBPW150	150W	1pc*150W	>13500lm (Tj=25℃)	AC85 – 305V	350*310*380mm
HBPW180	180W	1pc*180W	>16200lm (Tj=25℃)	AC85 – 305V	450*310*380mm
HBPW200	200W	1pc*200W	>18000lm (Tj=25℃)	AC85 – 305V	450*310*380mm

LED HIGH BAY LIGHT LED高棚灯



Reliable Technical Data 技术参数

- Input voltage 输入电压: AC85 – 305V
- Frequency 频率范围: 47 – 63Hz
- Power factor 功率因素: >0.95
- Luminous efficiency 发光效率: 90 – 100lm/W
- Light efficiency 灯具效率: >90%
- Operating temperature 适用环境温度: -30℃ – 50℃
- Color temperature 色温: 3,000K – 5,000K; 5,000K – 10,000K
- Color rendering index 显色指数Ra: 80 – 85
- Light distribution curve 配光曲线: round optical spot 圆形光斑
- Lighting angle 发光角度: 45°; 60°; 90°; 120°
- IP rating: IP54/ IP65
- Light body material 灯具材质: Aluminum house 铝材
- Economical lifetime 灯具寿命: >50,000Hrs
- Certification 认证: CE, RoHS, FCC, C-Tick, SAA, TUV & UL



Characteristics 产品特性

Model No 型号	LED Power 功率	LED Source 光源	Luminous Flux 光通量	Input Voltage 输入电压	D * H (mm) 尺寸
HBTW300	300W	3pcs*100W	>27000lm (Tj=25℃)	AC85 – 305V	D=350, H=400
HBTW320	320W	4pcs*80W	>28800lm (Tj=25℃)	AC85 – 305V	D=350, H=400
HBTW400	400W	4pcs*100W	>36000lm (Tj=25℃)	AC85 – 305V	D=350, H=400

LED STREET LIGHT LED路灯



Features:

- Applied wide voltage: AC85-305V, DC12V - 48V
- Streamline configuration combining with LED fittings perfectly. Aesthetic outlook of the light is also special landscape for the city
- Independent gear box has an upper cover simply and firmly locked by a rolling bar for easy installation and maintenance
- Pressure die-cast aluminum alloy housing guarantees IP65 with high intensity
- High light transmittance and constant color from superior temper glass diffusers
- Life span: >50,000Hrs
- Certifications: CE, RoHS, FCC, C-Tick, SAA, TUV & UL

产品特点:

- 适用宽电压: AC85 - 305V, DC12V - 48V
- 流畅的线性与 LED 结构特性有机结合, 外观简约舒畅, 具有良好的自清洗能力, 绝不积尘
- 光源、电器分离, 电器室为上开盖结构并采用旋转支臂锁紧, 无需工具便可开启, 便于安装、维修
- 灯体铝合金高压压铸成型, 具有足够的强度和良好的抗震性
- 灯具整体成形, 具有良好稳定的防护等级 IP65
- 透光罩采用优质钢化玻璃, 透光率高、不变色
- 寿命: >50,000小时
- 证书: CE, RoHS, FCC, C-Tick, SAA, TUV & UL

Application: street lighting on urban streets, gymnasiums, sidewalks, residential areas, industrial parks, squares, parks, schools and gardens.

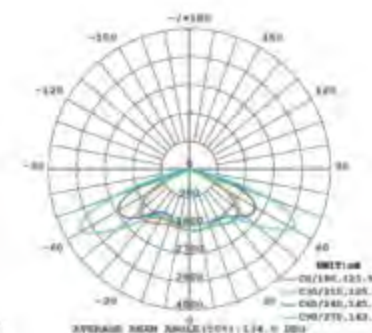
应用范围: 适用于城市主干道、次干道、体育场、人行道、居住区、工业区、广场、公园、学校、别墅、庭院等场所的路灯照明

LED STREET LIGHT LED路灯



Reliable Technical Data 技术参数

- Input voltage 输入电压: AC85 - 305V, DC24V - 48V
- Frequency 频率范围: 47 - 63Hz
- Power factor 功率因素: >0.95
- Luminous efficiency 发光效率: 90 - 100lm/W
- Light efficiency 灯具效率: >90%
- Operating temperature 使用环境温度: -30°C - 50°C
- Color temperature 色温: 3,000K - 5,000K; 5,000K - 10,000K
- Color rendering index 显色指数Ra: 80 - 85
- Light distribution curve 配光曲线: rectangular optical spot 矩形光斑
- Lighting angle 发光角度: 60° * 120°
- IP rating 防护指数: IP65
- Light body material 灯具材质: Aluminum house & PC 铝材 & PC
- Economical lifetime 灯具寿命: >50,000Hrs
- Certification 认证: CE, RoHS, FCC, C-Tick, SAA, TUV & UL



Characteristics 产品特性

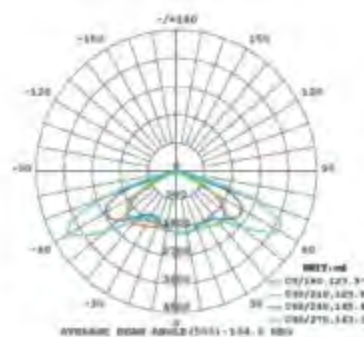
Model No 型号	LED Power 功率	LED Source 光源	Luminous Flux 光通量	Input Voltage 输入电压	L * W * H (mm) 尺寸
SNLW80	80W	80pcs*1W	>7200lm	AC85 - 305V, DC24 - 48V	560*270*110mm
SNLW100	100W	100pcs*1W	>9000lm	AC85 - 305V, DC24 - 48V	560*270*110mm
SNLW120	120W	120pcs*1W	>10800lm	AC85 - 305V	740*380*110mm
SNLW150	150W	150pcs*1W	>13500lm	AC85 - 305V	740*380*110mm
SNLW180	180W	180pcs*1W	>16200lm	AC85 - 305V	740*380*110mm
SNLW200	200W	200pcs*1W	>18000lm	AC85 - 305V	1130*380*110mm
SNLW240	240W	240pcs*1W	>21600lm	AC85 - 305V	1130*380*110mm

LED STREET LIGHT LED路灯



Reliable Technical Data 技术参数

- Input voltage 输入电压: AC85 – 305V, DC12V – 48V
- Frequency 频率范围: 47 – 63Hz
- Power factor 功率因素: >0.95
- Luminous efficiency 发光效率: 90 – 100lm/W
- Light efficiency 灯具效率: >90%
- Operating temperature 使用环境温度: -30°C – 50°C
- Color temperature 色温: 3,000K – 5,000K; 5,000K – 10,000K
- Color rendering index 显色指数Ra: 80 – 85
- Light distribution curve 配光曲线: rectangular optical spot 矩形光斑
- Lighting angle 发光角度: 60° * 120°
- IP rating 防护指数: IP65
- Light body material 灯具材质: Aluminum house & PC 铝材 & PC
- Economical lifetime 灯具寿命: >50,000Hrs
- Certification 认证: CE, RoHS, FCC, C-Tick, SAA, TUV & UL



Characteristics 产品特性

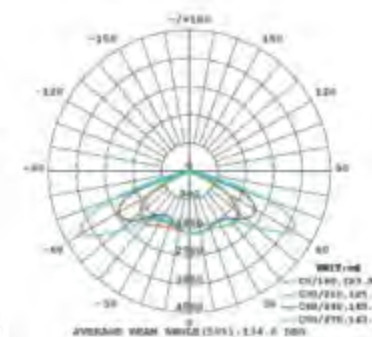
Model No 型号	LED Power 功率	LED Source 光源	Luminous Flux 光通量	Input Voltage 输入电压	L * W * H (mm) 尺寸
SLW40	40W	1pc*40W	>3600lm	AC85 – 305V, DC12 – 48V	560*270*110mm
SLW60	60W	1pc*60W	>5400lm	AC85 – 305V, DC24 – 48V	560*270*110mm
SLW80	80W	1pc*80W	>7200lm	AC85 – 305V, DC24 – 48V	560*270*110mm
SLW100	100W	2pcs*50W	>9000lm	AC85 – 305V, DC24 – 48V	740*380*110mm
SLW120	120W	2pcs*60W	>10800lm	AC85 – 305V	740*380*110mm

LED STREET LIGHT LED路灯



Reliable Technical Data 技术参数

- Input voltage 输入电压: AC85 – 305V
- Frequency 频率范围: 47 – 63Hz
- Power factor 功率因素: >0.95
- Luminous efficiency 发光效率: 90 – 100lm/W
- Light efficiency 灯具效率: >90%
- Operating temperature 使用环境温度: -30°C – 50°C
- Color temperature 色温: 3,000K – 5,000K; 5,000K – 10,000K
- Color rendering index 显色指数Ra: 80 – 85
- Light distribution curve 配光曲线: rectangular optical spot 矩形光斑
- Lighting angle 发光角度: 60° * 120°
- IP rating 防护指数: IP65
- Light body material 灯具材质: Aluminum house & PC 铝材 & PC
- Economical lifetime 灯具寿命: >50,000Hrs
- Certification 认证: CE, RoHS, FCC, C-Tick, SAA, TUV & UL



Characteristics 产品特性

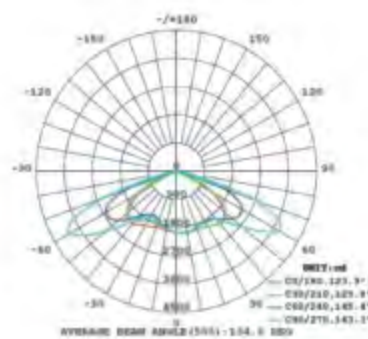
Model No 型号	LED Power 功率	LED Source 光源	Luminous Flux 光通量	Input Voltage 输入电压	L * W * H (mm) 尺寸
SLW160	160W	4pcs*40W	>14400lm	AC85 – 305V	740*380*110mm
SLW200	200W	4pcs*50W	>18000lm	AC85 – 305V	740*380*110mm
SLW240	240W	4pcs*60W	>21600lm	AC85 – 305V	740*380*110mm

LED STREET LIGHT LED路灯



Reliable Technical Data 技术参数

- Input voltage 输入电压: AC85 – 305V, DC12V – 48V
- Frequency 频率范围: 47 – 63Hz
- Power factor 功率因素: >0.95
- Luminous efficiency 发光效率: 90 – 100lm/W
- Light efficiency 灯具效率: >90%
- Operating temperature 使用环境温度: -30°C – 50°C
- Color temperature 色温: 3,000K – 5,000K; 5,000K – 10,000K
- Color rendering index 显色指数 Ra: 80 – 85
- Light distribution curve 配光曲线: rectangular optical spot 矩形光斑
- Lighting angle 发光角度: 60° * 120°
- IP rating 防护指数: IP65
- Light body material 灯具材质: Aluminum house & PC 铝材 & PC
- Economical lifetime 灯具寿命: >50,000Hrs
- Certification 认证: CE, RoHS, FCC, C-Tick, SAA, TUV & UL



Characteristics 产品特性

Model No 型号	LED Power 功率	LED Source 光源	Luminous Flux 光通量	Input Voltage 输入电压	L * W * H (mm) 尺寸
SVLW40	40W	2pcs*20W	>3600lm	AC85 – 305V, DC12 – 48V	650*250*70mm
SVLW60	60W	2pcs*30W	>5400lm	AC85 – 305V, DC24 – 48V	650*250*70mm
SVLW80	80W	2pcs*40W	>7200lm	AC85 – 305V, DC24 – 48V	650*250*70mm
SVLW120	120W	3pcs*40W	>10800lm	AC85 – 305V	780*300*110mm
SVLW150	150W	3pcs*50W	>13500lm	AC85 – 305V	780*300*110mm
SVLW180	180W	3pcs*60W	>16200lm	AC85 – 305V	780*300*110mm

LED STREET LIGHT BULB LED路灯灯泡



Features:

- Wide working voltage: AC85 – 305V
- High efficiency, low-heat, high-precision
- No lead, no mercury, no environmental pollution
- High color index, high brightness. Multiple Color Temperature for choose
- Standard E27, E40 sockets, for direct replacement
- Life span: >50,000Hrs
- Certifications: CE, RoHS, FCC, C-Tick, SAA, TUV & UL

产品特点:

- 宽工作电压: AC85 – 305V
- 发光效率高, 低热度, 高精度
- 无铅无汞, 对环境无污染
- 显色指数高, 高亮度; 多种色温供选
- 标准的 E27, E40 接口, 可直接替换
- 寿命: >50,000小时
- 证书: CE, RoHS, FCC, C-Tick, SAA, TUV & UL

Application: Ideal application for street lighting on gymnasiums, sidewalks, residential areas, industrial parks, squares, parks, schools and gardens.

应用范围: 适用于体育场、人行道、居住区、工业区、广场、公园、学校、别墅、庭院等场所的路灯照明

LED STREET LIGHT BULB LED路灯灯泡



Model: SLBW28
Power: 28W
Lumens: 2520lm
Dimension: $\phi 92 \times 260 \text{mm}$



Model: SLBW40
Power: 40W
Lumens: 3600lm
Dimension: $\phi 124 \times 290 \text{mm}$



Model: SLBW60
Power: 60W
Lumens: 5400lm
Dimension: $\phi 148 \times 240 \text{mm}$



Model: SLTW24
Power: 24W
Lumens: 2160lm
Dimension: $\phi 103 \times 220 \text{mm}$



Model: SLTW36
Power: 36W
Lumens: 3240lm
Dimension: $\phi 103 \times 260 \text{mm}$



Model: SLTW42
Power: 42W
Lumens: 3780lm
Dimension: $\phi 103 \times 310 \text{mm}$

LED TUBE LIGHT LED日光灯管



Features:

- Working voltage: AC85 – 305V
- Professional heat dissipation treatment, which make sure the LED working under safe temperature, to ensure the life span of the lamp
- The proliferation of high-translucent material, to eliminate LED dazzling effect
- Inner efficient constant-current drive, which improving the whole lighting effect
- High shock / vibration resistant, No RF interference
- Maintenance free, easy installation, low power consumption, high intensity
- Life span: >50,000Hrs
- Certifications: CE, RoHS, FCC, C-Tick, SAA, TUV & UL

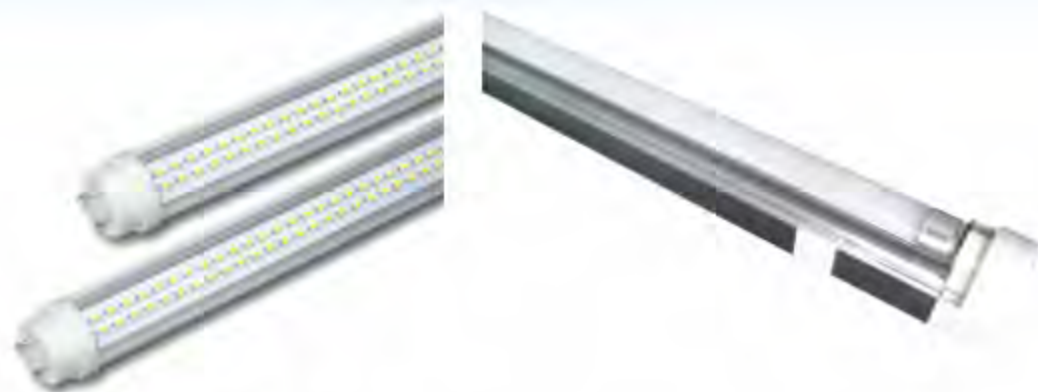
产品特点:

- 宽电压范围工作: AC85 – 305V
- 专业的散热处理, 使 LED 芯片在安全的工作温度范围内工作, 保证寿命
- 采用高透光性的光扩散材料, 消除 LED 炫光效果
- 内置高效率的恒流驱动电源, 提高整灯光效
- 耐冲击及振动, 无射频干扰
- 维护简单, 安装方便; 低功耗, 高强度
- 寿命: >50,000小时
- 证书: CE, RoHS, FCC, C-Tick, SAA, TUV & UL

Application: General illumination for home, office, restaurant, hotel, mall, bus, train, warehouse, parking lots etc. indoor lighting.

产品应用: 广泛用于家居, 办公, 餐厅, 酒店, 购物中心, 汽车, 火车, 仓库, 停车场等室内照明

LED TUBE LIGHT LED日光灯管



Reliable Technical Data技术参数

- Input voltage 输入电压: AC85 – 305V
- Frequency 频率范围: 47 – 63Hz
- Power factor 功率因素: >0.95
- Luminous efficiency 发光效率: 90 – 100lm/W
- Light efficiency 灯具效率: >90%
- Operating temperature 适用环境温度: -30℃ – 50℃
- Color temperature 色温: 3,000K – 5,000K; 5,000K – 10,000K
- Color rendering index 显色指数Ra: 80 – 85
- Light distribution curve 配光曲线: rectangular optical spot 矩形光斑
- Sockets 接口: T5, T8, T10, T12
- Light body material 灯具材质: Aluminum + Transparent PC / Milky PC 铝材 & PC
- Economical lifetime 灯具寿命: >50,000Hrs
- Certification 认证: CE, RoHS, FCC, C-Tick, SAA, TUV & UL

Characteristics 产品特性

Model No 型号	LED Power 功率	Luminous Flux 光通量	Input Voltage 输入电压	L * W * H (mm) 尺寸
ZJ-TLW9	9W	>810lm	AC85 – 305V	600mm
ZJ-TLW12	12W	>1080lm	AC85 – 305V	900mm
ZJ-TLW15	15W	>1350lm	AC85 – 305V	1200mm
ZJ-TLW18	18W	>1620lm	AC85 – 305V	1200mm
ZJ-TLW20	20W	>1800lm	AC85 – 305V	1200mm/1500mm
ZJ-TLW22	22W	>1980lm	AC85 – 305V	1200mm/1500mm
ZJ-TLW25	25W	>2250lm	AC85 – 305V	1200mm/1500mm
ZJ-TLW30	30W	>2700lm	AC85 – 305V	1200mm/1500mm

LED PANNEL LIGHT LED面板灯



Features:

- Special design with side lighting for better lighting effect
- Using high quality Light Guide Plate
- Driver is external for better heat dissipation
- High brightness LEDs and high luminous efficiency
- Maintenance free, easy installation
- Life span: >50,000Hrs
- Certifications: CE, RoHS, FCC, C-Tick, SAA, TUV & UL

产品特点:

- 特殊的侧面发光设计, 使发光更均匀
- 采用进口高质量导光板
- 电源外置, 以保证更好的散热效果
- 使用高亮度灯珠, 保证更高的发光效率
- 维护简单, 安装方便
- 寿命: >50,000小时
- 证书: CE, RoHS, FCC, C-Tick, SAA, TUV & UL

Application: General illumination for home, office, restaurant, hotel, mall, parking lots etc.

产品应用: 广泛用于家居, 办公, 餐厅, 酒店, 购物中心, 汽车, 火车, 仓库, 停车场等室内照明

LED PANNEL LIGHT LED面板灯



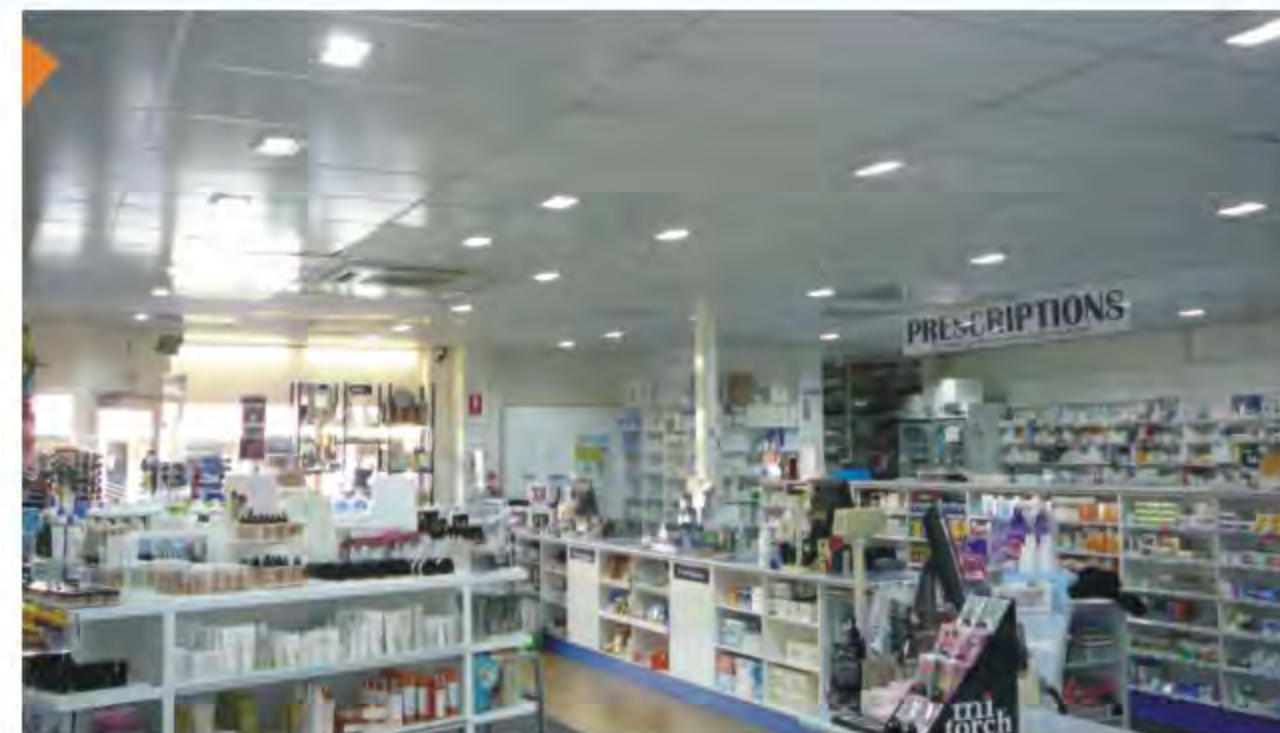
■ Reliable Technical Data 技术参数

- Input voltage 输入电压: AC85 – 305V
- Frequency 频率范围: 47 – 63Hz
- Power factor 功率因素: >0.95
- Luminous efficiency 发光效率: 90 – 100lm/W
- Light efficiency 灯具效率: >90%
- Operating temperature 适用环境温度: -30℃ – 50℃
- Color temperature 色温: 3,000K – 5,000K; 5,000K – 10,000K
- Color rendering index 显色指数 Ra: 80 – 85
- Light distribution curve 配光曲线: rectangular optical spot 矩形光斑
- Lighting angle 发光角度: 120°
- IP rating 防护指数: IP44
- Light body material 灯具材质: Aluminum & PC 铝材 & PC
- Economical lifetime 灯具寿命: >50,000Hrs
- Certification 认证: CE, RoHS, FCC, C-Tick, SAA, TUV & UL

■ Characteristics 产品特性

Model No 型号	LED Power 功率	Luminous Flux 光通量	Input Voltage 输入电压	L * W * H (mm) 尺寸
PLM16	16W	>1440lm (Tj=25℃)	AC85 – 305V	300*300*12mm
PLM28-A	28W	>2520lm (Tj=25℃)	AC85 – 305V	600*600*12mm
PLM56-A	56W	>5040lm (Tj=25℃)	AC85 – 305V	600*600*12mm
PLM28-B	28W	>2520lm (Tj=25℃)	AC85 – 305V	300*600*12mm
PLM56-B	56W	>5040lm (Tj=25℃)	AC85 – 305V	600*1200*12mm

LED SHOP LIGHT LED商店灯



Feature:

- High quality, low price, adjustable angle
- Special design for easier heat sinking, energy-saving and longer lifespan
- Using high-brightness LED chip, to achieve real high brightness
- Eco-friendly, no lights flicker; no noise
- Light body with high-quality aluminum alloy casting, good heat dissipation
- Small size, easy to install
- Life span: >50,000 hours
- Certification: CE, RoHS, FCC, C-Tick, SAA, TUV & UL

产品特点:

- 质量好，价格低，角度可调
- 优良的散热设计，节约能源，寿命长
- 采用高亮度的LED芯片，照明效果好
- 无污染，无闪烁，无噪音
- 灯体采用高质量铝壳，散热性能好
- 体积小，便于安装
- 寿命: >50,000小时
- 证书: CE, RoHS, FCC, C-Tick, SAA, TUV & UL

LED SHOP LIGHT LED商店灯



Reliable Technical Data 技术参数

- Input voltage 输入电压: AC85 – 305V, DC12V – 48V
- Frequency 频率范围: 47 – 63Hz
- Power factor 功率因素: >0.95
- Luminous efficiency 发光效率: 90 – 100lm/W
- Light efficiency 灯具效率: >90%
- Operating temperature 适用环境温度: -30℃ – 50℃
- Color temperature 色温: 3,000K – 5,000K; 5,000K – 10,000K
- Color rendering index 显色指数 Ra: 80 – 85
- Lighting angle 发光角度: 120° * 60° rectangular optical 矩形光斑
or 60° round optical 圆形光斑
- Light body material 灯具材质: Aluminum house & PC 铝材 & PC
- Economical lifetime 灯具寿命: >50,000Hrs
- Certification 认证: CE, RoHS, FCC, C-Tick, SAA, TUV & UL

Characteristics 产品特性

Model No 型号	LED Power 功率	LED Source 光源	Luminous Flux 光通量	Input Voltage 输入电压	L * W * H (mm) 尺寸
ZJ-SHLW20	20W	2pcs*10W	>1800lm (Tj=25℃)	AC85 – 305V, DC12 – 48V	230*140*110mm
ZJ-SHLW30	30W	3pcs*10W	>2700lm (Tj=25℃)	AC85 – 305V, DC12 – 48V	230*140*110mm
ZJ-SHLW40	40W	2pcs*20W	>3600lm (Tj=25℃)	AC85 – 305V, DC12 – 48V	230*140*110mm

LED MOISTUREPROOF CEILING LIGHT – IP65 LED防潮灯



Features:

- Input voltage: AC85 – 305V, 47 – 63Hz
- Anti-glare, giving visual comfort light
- Small size, light weight, and shock resistant
- Easy to dimmer and control
- Health, clean, no ultraviolet and infrared radiation
- Life span: >50,000Hrs
- Certifications: CE, RoHS, FCC, C-Tick, SAA, TUV & UL

产品特点:

- 宽电压范围工作: AC85 – 305V, 47-63Hz
- 防止反光, 提供更柔和的可见光
- 体积小, 重量轻、耐抗击
- 易于调光、可控性大
- 健康, 干净, 没有紫外线及红外线辐射
- 寿命: >50,000小时
- 证书: CE, RoHS, FCC, C-Tick, SAA, TUV & UL

Application: home, office, restaurant, hotel, mall, warehouse, parking lots etc.

产品应用: 家庭, 办公室, 餐厅, 酒店, 购物中心及其他室内照明

LED MOISTUREPROOF CEILING LIGHT – IP65 LED防潮灯



Model: CPW5
Power: 5W
Lumens: 450lm
Dimension: ϕ 145*65mm



Model: CPW10
Power: 10W
Lumens: 900lm
Dimension: 220*135*65mm



Model: CPW12
Power: 12W
Lumens: 1080lm
Dimension: 280*185*100mm



Model: CPW15A
Power: 15W
Lumens: 1350lm
Dimension: 280*185*100mm



Model: CPW15B
Power: 15W
Lumens: 1350lm
Dimension: ϕ 270*80mm



Model: CPW15C
Power: 15W
Lumens: 1350lm
Dimension: 300*300*90mm



Model: CPW18A
Power: 18W
Lumens: 1620lm
Dimension: ϕ 300*85mm



Model: CPW18B
Power: 18W
Lumens: 1620lm
Dimension: 300*300*90mm



Model: CPW20
Power: 20W
Lumens: 1800lm
Dimension: 300*300*90mm

LED RESIDENTIAL LIGHT LED商业照明灯



Features:

- ⊗ Working voltage: AC85 – 305V, 47 – 63Hz
- ⊗ Anti-glare, giving visual comfort
- ⊗ Take super brightness LED as light source
- ⊗ Standard E27 sockets, for direct replacement
- ⊗ Professional aluminum housing design for good heat dissipation
- ⊗ Health, clean, no ultraviolet and infrared radiation
- ⊗ Life span: >50,000Hrs
- ⊗ Certifications: CE, RoHS, FCC, C-Tick, SAA, TUV & UL

产品特点:

- ⊗ 宽电压范围工作: AC85 – 305V, 47 – 63Hz
- ⊗ 防止反光, 提供更柔和的可见光
- ⊗ 使用高亮度的LED光源
- ⊗ 标准E27接口, 可直接替换
- ⊗ 专业的铝壳设计, 散热效果好
- ⊗ 健康, 干净, 没有紫外线及红外线辐射
- ⊗ 寿命: >50,000小时
- ⊗ 证书: CE, RoHS, FCC, C-Tick, SAA, TUV & UL

Application: home, office, restaurant, hotel, mall, warehouse, parking lots etc.

产品应用: 家庭, 办公室, 餐厅, 酒店, 购物中心及其他室内照明

LED CORN LIGHT LED玉米灯



Model: CLW3
Power: 3W
Lumens: 270lm
Dimension: $\phi 48 \times 118\text{mm}$



Model: CLW5
Power: 5W
Lumens: 450lm
Dimension: $\phi 48 \times 128\text{mm}$



Model: CLW7
Power: 7W
Lumens: 630lm
Dimension: $\phi 48 \times 138\text{mm}$



Model: CLW9
Power: 9W
Lumens: 810lm
Dimension: $\phi 48 \times 153\text{mm}$



Model: CLW10
Power: 10W
Lumens: 900lm
Dimension: $\phi 80.5 \times 188\text{mm}$



Model: CLW12
Power: 12W
Lumens: 1080lm
Dimension: $\phi 80.5 \times 213\text{mm}$



Model: CLW18
Power: 18W
Lumens: 1620lm
Dimension: $\phi 80.5 \times 233\text{mm}$



Model: CLW20
Power: 20W
Lumens: 1800lm
Dimension: $\phi 80.5 \times 233\text{mm}$



Model: CLW23
Power: 23W
Lumens: 2070lm
Dimension: $\phi 80.5 \times 253\text{mm}$

LED G24 HORIZON LIGHT LED横插灯



Model: ZJ-G24-LW5
Power: 5W
Lumens: 450lm
Dimension: $\phi 35 \times 120.5\text{mm}$



Model: ZJ-G24-LW7
Power: 7W
Lumens: 630lm
Dimension: $\phi 35 \times 120.5\text{mm}$



Model: ZJ-G24-LW8
Power: 8W
Lumens: 720lm
Dimension: $\phi 35 \times 143.5\text{mm}$



Model: ZJ-G24-LW9
Power: 9W
Lumens: 810lm
Dimension: $\phi 35 \times 143.5\text{mm}$



Model: ZJ-G24-LW10
Power: 10W
Lumens: 900lm
Dimension: $\phi 35 \times 148.5\text{mm}$



Model: ZJ-G24-LW11
Power: 11W
Lumens: 990lm
Dimension: $\phi 35 \times 160.5\text{mm}$



Model: ZJ-G24-LW12
Power: 12W
Lumens: 1080lm
Dimension: $\phi 35 \times 160.5\text{mm}$



Model: ZJ-G24-LW13
Power: 13W
Lumens: 1170lm
Dimension: $\phi 35 \times 188.5\text{mm}$



Model: ZJ-G24-LW15
Power: 15W
Lumens: 1350lm
Dimension: $\phi 35 \times 188.5\text{mm}$

LED DOWN LIGHT LED吸顶灯



Model: ZJ-DL-3W
Power source: 3*1W
Lumens: 270lm



Model: ZJ-DL-5W
Power source: 5*1W
Lumens: 450lm



Model: ZJ-DL-7W
Power source: 7*1W
Lumens: 630lm



Model: ZJ-DL-9W
Power source: 9*1W
Lumens: 810lm



Model: ZJ-DL-12W
Power source: 12*1W
Lumens: 1080lm



Model: ZJ-DL-15W
Power source: 15*1W
Lumens: 1350lm



Model: ZJ-DL-18W
Power source: 18*1W
Lumens: 1620lm



Model: ZJ-DL-24W
Power source: 24*1W
Lumens: 2160lm



Model: ZJ-DL-36W
Power source: 36*1W
Lumens: 3240lm

LED CEILING LIGHT LED筒灯



Model: ZJ-LC3W
Power source: 3*1W
Lumens: 270lm
Dimension: $\phi 91 \times 56\text{mm}$
Hole size: 75mm



Model: ZJ-LC7W
Power source: 7*1W
Lumens: 630lm
Dimension: $\phi 130 \times 72\text{mm}$
Hole size: 110mm



Model: ZJ-LC9W
Power source: 9*1W
Lumens: 810lm
Dimension: $\phi 140 \times 45\text{mm}$
Hole size: 120mm



Model: ZJ-LC15W
Power source: 15*1W
Lumens: 1350lm
Dimension: $\phi 180 \times 75\text{mm}$
Hole size: 152mm



Model: ZJ-LC18W
Power source: 18*1W
Lumens: 1620lm
Dimension: $\phi 190 \times 80\text{mm}$
Hole size: 160mm



Model: ZJ-LC24W
Power source: 24*1W
Lumens: 2160lm
Dimension: $\phi 230 \times 86\text{mm}$
Hole size: 194mm



Model: ZJ-LC30W
Power source: 30*1W
Lumens: 2700lm
Dimension: $\phi 240 \times 81\text{mm}$
Hole size: 214mm



Model: ZJ-LC36W
Power source: 36*1W
Lumens: 3240lm
Dimension: $\phi 240 \times 81\text{mm}$
Hole size: 214mm



Model: ZJ-LC45W
Power source: 45*1W
Lumens: 4050lm
Dimension: $\phi 240 \times 81\text{mm}$
Hole size: 214mm

LED BULB LED灯泡



Model: ZJ-CBLW3A
Power: 3W
Lumens: 270lm
Dimension: $\phi 36 \times 130\text{mm}$



Model: ZJ-CBLW3B
Power: 3W
Lumens: 270lm
Dimension: $\phi 38 \times 130\text{mm}$



Model: ZJ-CBLW4
Power: 4W
Lumens: 360lm
Dimension: $\phi 38 \times 150\text{mm}$



Model: ZJ-BLW3
Power: 3W
Lumens: 270lm
Dimension: $\phi 50 \times 85\text{mm}$



Model: ZJ-BLW5
Power: 5W
Lumens: 450lm
Dimension: $\phi 60 \times 110\text{mm}$



Model: ZJ-BLW7
Power: 7W
Lumens: 630lm
Dimension: $\phi 58 \times 116\text{mm}$



Model: ZJ-BLW9
Power: 9W
Lumens: 810lm
Dimension: $\phi 70 \times 160\text{mm}$



Model: ZJ-BLW12
Power: 12W
Lumens: 1080lm
Dimension: $\phi 78 \times 145\text{mm}$



Model: ZJ-BLW15
Power: 15W
Lumens: 1350lm
Dimension: $\phi 95 \times 195\text{mm}$

LED SPOT LIGHT LED射灯



Model: ZJ-SPL-3W
Power source: 3*1W
Lumens: 270lm
Socket: E27, GU10, Mr16



Model: ZJ-SPL-4W
Power source: 4*1W
Lumens: 360lm
Socket: E27, GU10, Mr16



Model: ZJ-SPL-6W
Power source: 3*2W
Lumens: 540lm
Socket: E27, GU10, Mr16



Model: ZJ-SPL-9W
Power source: 6*1.5W
Lumens: 800lm
Socket: E27



Model: ZJ-SPL-12WA
Power source: 6*2W
Lumens: 1080lm
Socket: E27



Model: ZJ-SPL-12WB
Power source: 12*1W
Lumens: 1080lm
Socket: E27



Model: ZJ-SPL-12WC
Power source: 12*1W
Lumens: 1080lm
Socket: E27



Model: ZJ-SPL-15W
Power source: 9*1.7W
Lumens: 1350lm
Socket: E27



Model: ZJ-SPL-18W
Power source: 9*2W
Lumens: 1620lm
Socket: E27